

# Financially-Constrained Bikeway System Projects

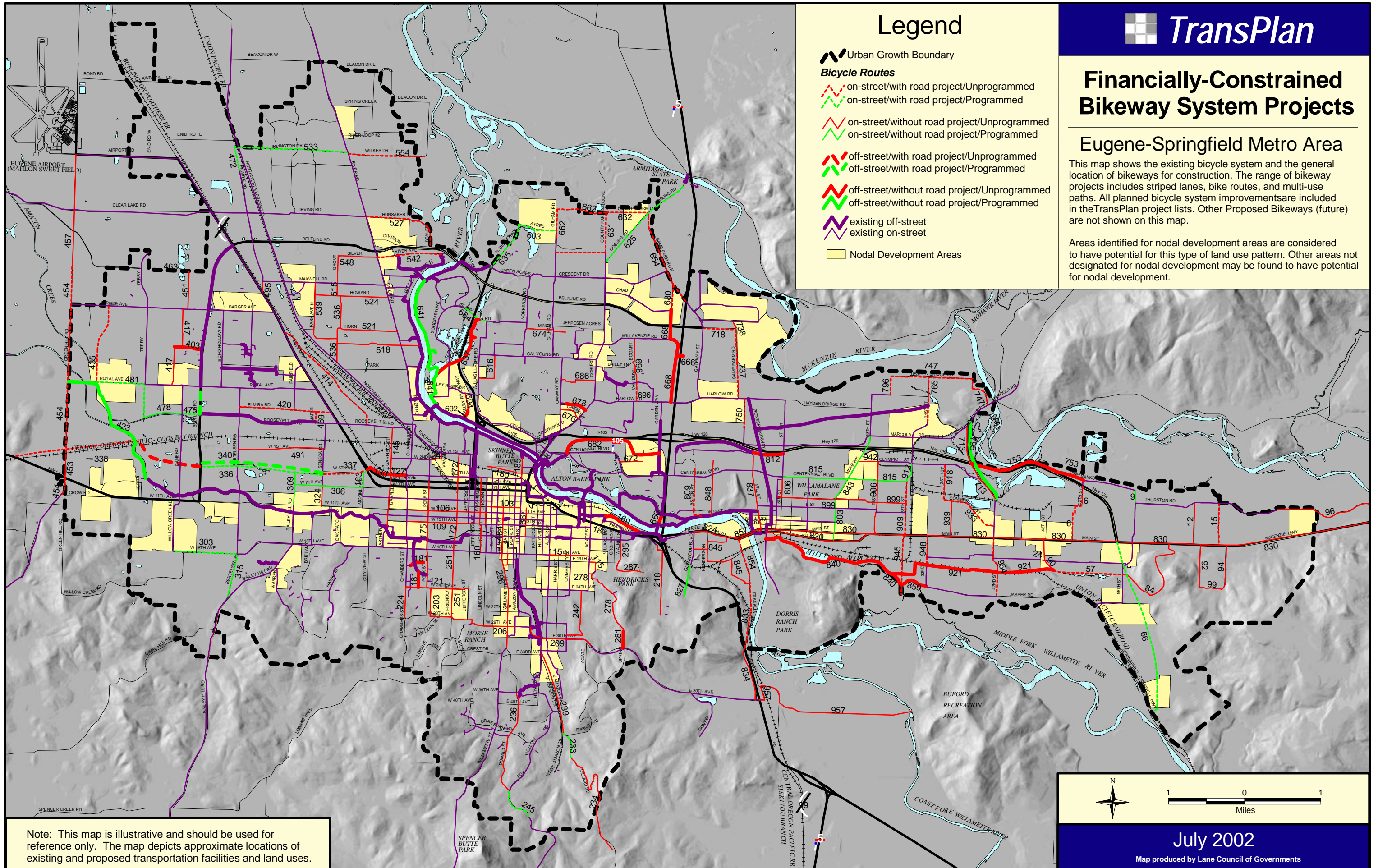
## Eugene-Springfield Metro Area

This map shows the existing bicycle system and the general location of bikeways for construction. The range of bikeway projects includes striped lanes, bike routes, and multi-use paths. All planned bicycle system improvements are included in the TransPlan project lists. Other Proposed Bikeways (future) are not shown on this map.

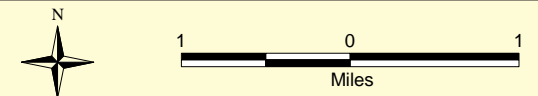
Areas identified for nodal development areas are considered to have potential for this type of land use pattern. Other areas not designated for nodal development may be found to have potential for nodal development.

### Legend

- Urban Growth Boundary
- Bicycle Routes**
- on-street/with road project/Unprogrammed
- on-street/with road project/Programmed
- on-street/without road project/Unprogrammed
- on-street/without road project/Programmed
- off-street/with road project/Unprogrammed
- off-street/with road project/Programmed
- off-street/without road project/Unprogrammed
- off-street/without road project/Programmed
- existing off-street
- existing on-street
- Nodal Development Areas



Note: This map is illustrative and should be used for reference only. The map depicts approximate locations of existing and proposed transportation facilities and land uses.



July 2002

Map produced by Lane Council of Governments