

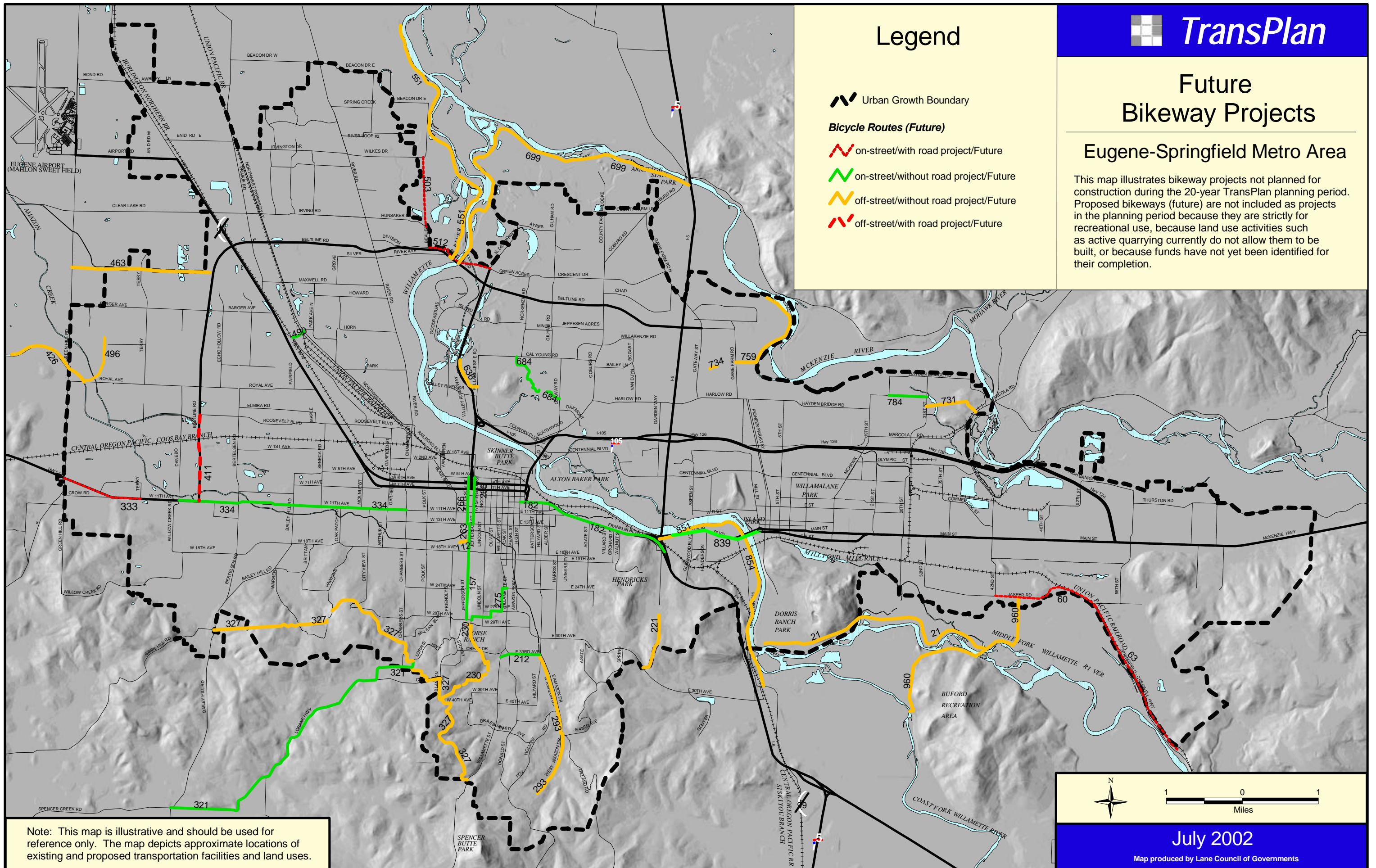
Future Bikeway Projects

Eugene-Springfield Metro Area

This map illustrates bikeway projects not planned for construction during the 20-year TransPlan planning period. Proposed bikeways (future) are not included as projects in the planning period because they are strictly for recreational use, because land use activities such as active quarrying currently do not allow them to be built, or because funds have not yet been identified for their completion.

Legend

- Urban Growth Boundary
- Bicycle Routes (Future)**
- on-street/with road project/Future
- on-street/without road project/Future
- off-street/without road project/Future
- off-street/with road project/Future



Note: This map is illustrative and should be used for reference only. The map depicts approximate locations of existing and proposed transportation facilities and land uses.

